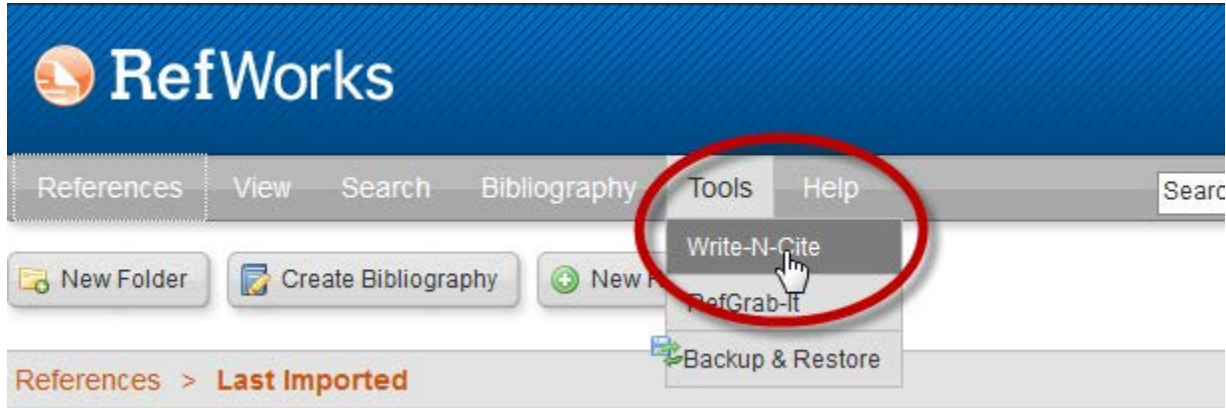


Setting Up Write 'n Cite in Microsoft Word on a Windows PC—in Words and Pictures.

1. Go to RefWorks and create your account.
2. Once in RefWorks from “Tools” select Write 'n Cite.



Download and install. There are separate versions for 32 bit Word, as shown here, and 64 bit Word.

Downloads



[Write-N-Cite 4 for 32 bit Word](#) 50.1 Mb

Version: 4.4.1272 (2014-09-09)

For Windows XP, Windows Vista, Windows 7 and Windows 8
Supports Word 2007, Word 2010 and Word 2013

Having trouble installing Write-N-Cite 4? Our [installation guide](#) might help, or you may need to check the [Mac](#) or [Windows](#) software requirements.

▶ [Other Versions](#)

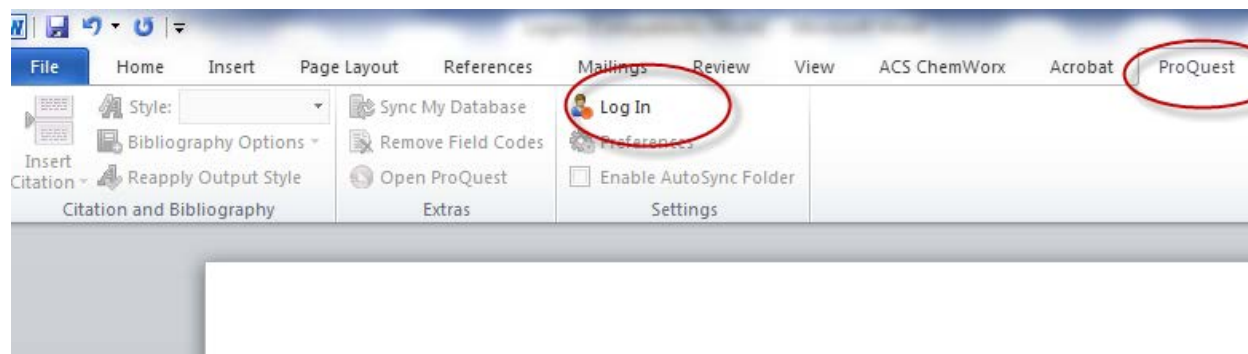
Also on the page is the login code that sets up Write'n Cite to be active in your Word document.

How do I log into Write-N-Cite 4 using my institution credentials?

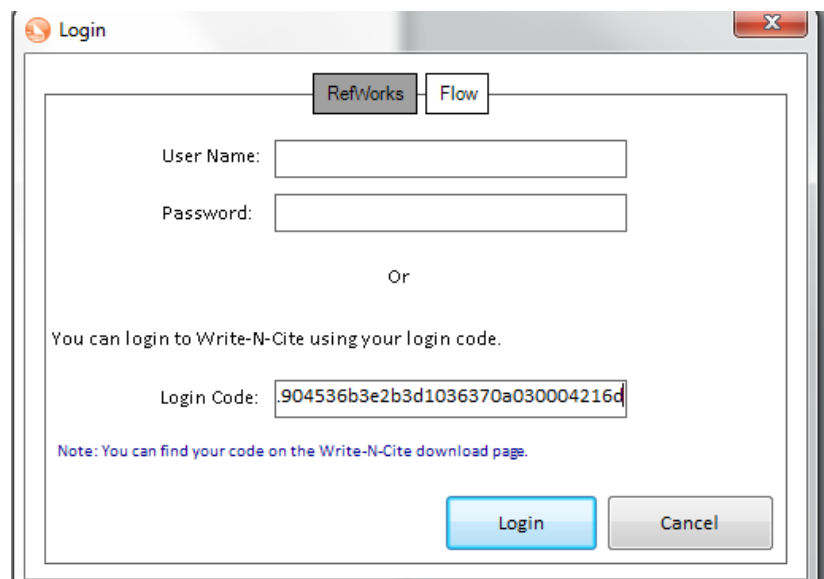
If you use your institution's credentials (Athens, Shibboleth or Proxy) to log in to RefWorks, you MUST copy and use this code on the Write-N-Cite 4 login screen:

```
455c744353724a506558516f4414392a1075163d162a0c0a3f3130  
295d05432b113f13151c4524272a6e0736113b51
```

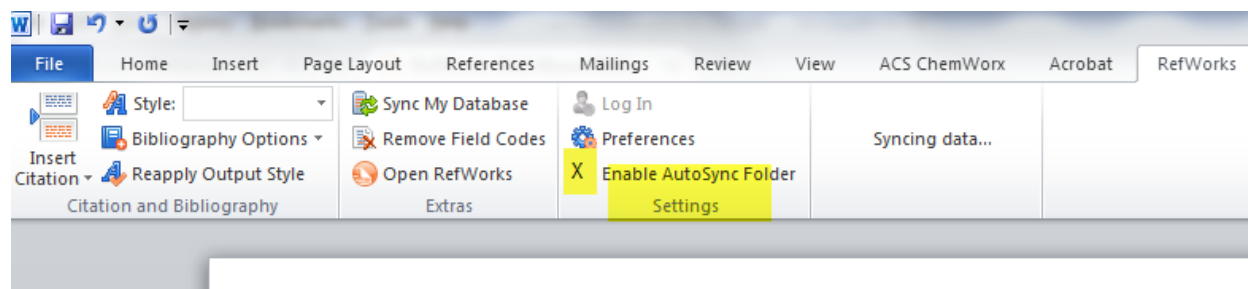
Open Word and check for the ProQuest tab (might be in “Add ins”) and click Log In.



This is where you put the login code:



Now the features are “live” and you can “sync” to RefWorks.

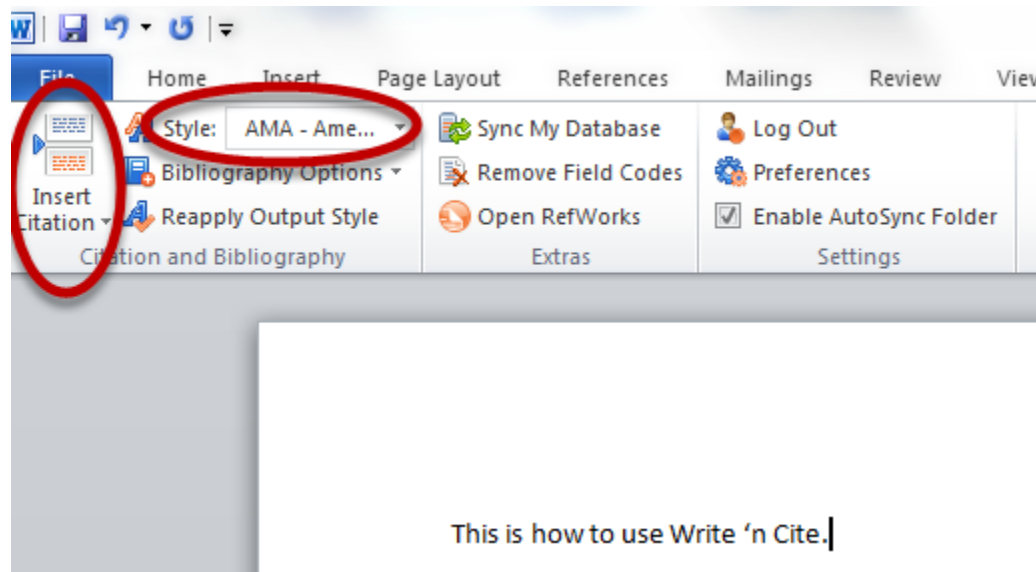


Using Write 'n Cite with Word

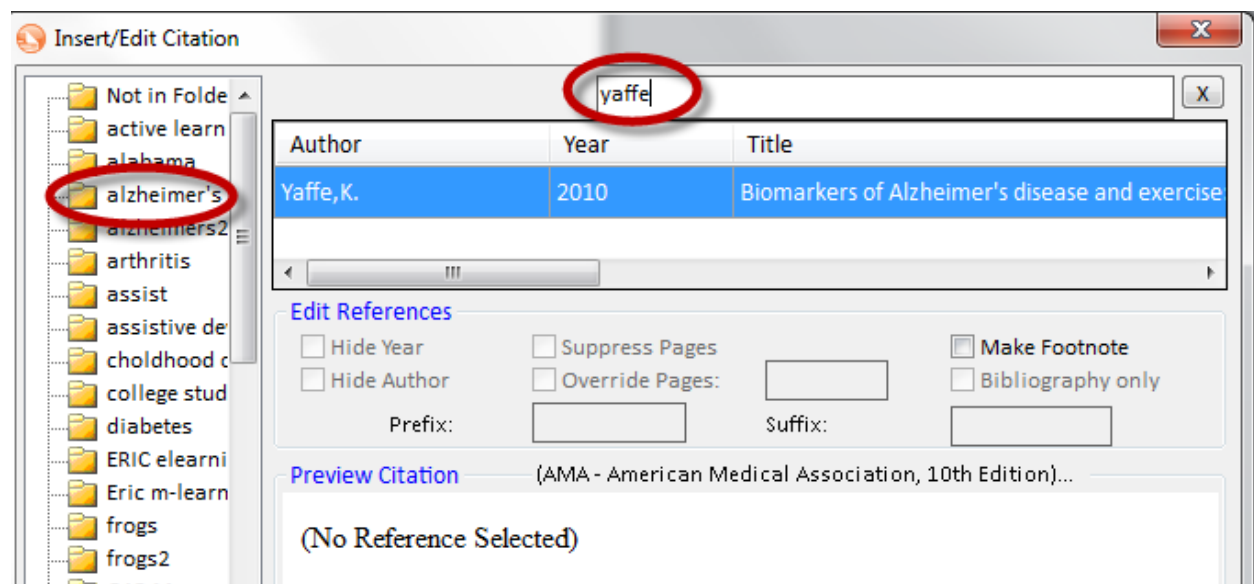
Name and “save” your Word document, select your citation style. See the YouTube video for selecting your “Favorites” styles using the Output Citation manager.

<http://www.youtube.com/watch?v=8r2JZpAPuF0&list=PLB079DD891F3175F1>.

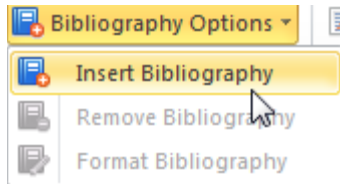
Start writing your report. When you come to the end of the sentence after which you want a citation reference, click “Insert Citation.”



You can select to work from only citations in a specific folder you have created or you can search all citations by typing an author’s name, keyword or name of journal in the search box.



Write 'n Cite will insert the name and date, superscript, subscript of whatever format your style uses. When you have finished, from "Bibliography Options," select "Format Bibliography." Be sure to have your correct citation style selected.



Your text with your citation style's preferred in-text formatting and your bibliography is done.

This is how you use Write n Cite.¹ RefWorks Write n Cite will insert your citations as you write.² You can insert references either from a folder, if you have created them or you can search by author, subject or journal title.³

1. Garcia Y, Lopez-Ramos JC, Gimenez-Llort L, et al. Physical exercise protects against alzheimer's disease in 3xTg-AD mice. J Alzheimers Dis. 2011.

2. Yaffe K. Biomarkers of alzheimer's disease and exercise: One step closer to prevention. Ann Neurol. 2010;68(3):275-276.

3. Berman B. A 60-year-old woman considering acupuncture for knee pain. JAMA. 2007;297(15):1697-1707.